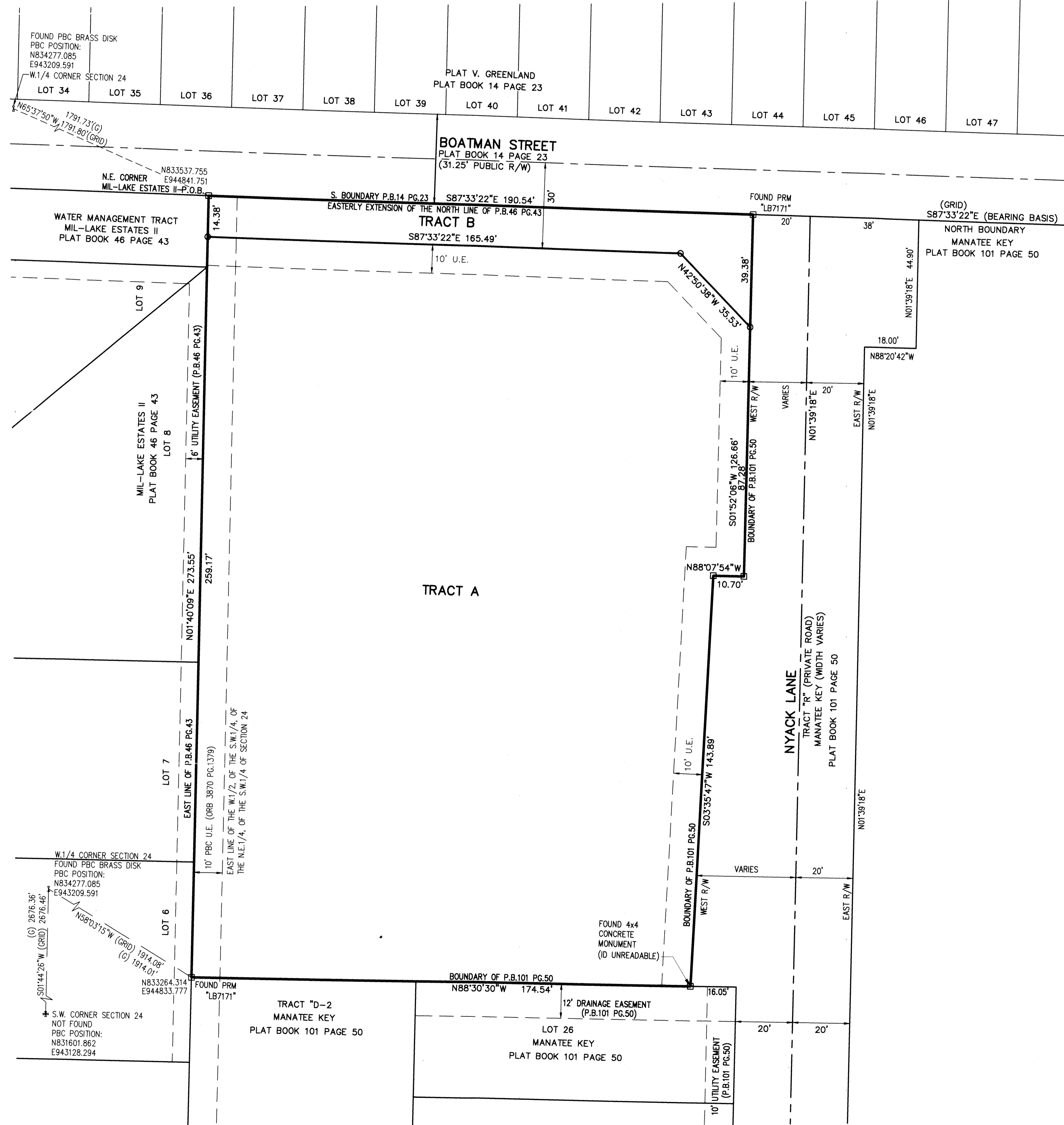
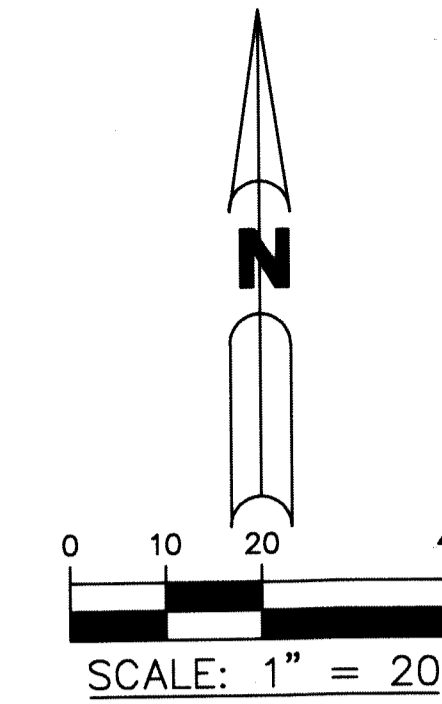


83

# VILLAS OF BOATMAN

LYING IN THE SOUTHWEST QUARTER (S.W. 1/4), OF THE NORTHEAST QUARTER (N.E. 1/4),  
OF THE SOUTHWEST QUARTER (S.W. 1/4) OF SECTION 24, TOWNSHIP 44 SOUTH, RANGE 42 EAST,  
PALM BEACH COUNTY, FLORIDA,

SHEET 2 OF 2



**LEGEND:**  
**ABBREVIATIONS:**  
 P.O.B. - POINT OF BEGINNING  
 ORB - OFFICIAL RECORD BOOK  
 D.B. - DEED BOOK  
 P.B. - PLAT BOOK  
 NO. - NUMBER  
 PG. - PAGE  
 R/W - RIGHT-OF-WAY  
 SEC. - SECTION  
 FPL - FLORIDA POWER & LIGHT  
 C - CENTERLINE  
 U.E. - UTILITY EASEMENT  
 R - RADIUS  
 Δ - CENTRAL ANGLE  
 A - ARC LENGTH

PBC - PALM BEACH COUNTY  
 NAD - NORTH AMERICAN DATUM  
 (G) - GROUND DIMENSION  
 24/44/42 - SECTION 24, TOWNSHIP 44 SOUTH, RANGE 42 EAST  
 LLC - LIMITED LIABILITY COMPANY  
 NAD - NORTH AMERICAN DATUM  
 LB - LICENSED BUSINESS

**SYMBOLS:**  
 □ PERMANENT REFERENCE MONUMENT (P.R.M.), SET 4"x4" CONCRETE MONUMENT WITH DISK STAMPED "LB6473", UNLESS NOTED OTHERWISE  
 ● PERMANENT REFERENCE MONUMENT (P.R.M.), NAIL AND DISK STAMPED "PRM LB6473"  
 ○ MONUMENT, 1/2" IRON ROD WITH CAP STAMPED "BROWN & PHILLIPS, INC."

**STATE PLANE COORDINATES:**  
 A. COORDINATES SHOWN ARE GRID  
 B. DATUM - NAD 83, 1990 ADJUSTMENT  
 C. ZONE - FLORIDA EAST  
 D. LINEAR UNIT - US SURVEY FOOT  
 E. COORDINATE SYSTEM 1983 STATE PLANE  
 F. TRANSVERSE MERCATOR PROJECTION  
 G. ALL DISTANCES ARE GROUND, UNLESS OTHERWISE NOTED  
 H. SCALE FACTOR - 1.0000368  
 I. GROUND DISTANCE x SCALE FACTOR = GRID DISTANCE  
 J. ROTATION EQUATION: NONE

PREPARING SURVEYOR & MAPPER'S STATEMENT  
 THIS INSTRUMENT WAS PREPARED BY  
**BROWN & PHILLIPS, INC.**  
 JOHN E. PHILLIPS III, P.S.M. 4826  
 CERTIFICATE OF AUTHORIZATION # LB 6473  
 1860 OLD OKEECHOBEE RD., SUITE 509  
 WEST PALM BEACH, FLORIDA 33409  
 561-615-3988, 615-3986 FAX

Small vertical text on the left margin, likely a reference or disclaimer.